

Analyse af Business check 2005 til 2009 for søer med produktion af 30 kg grise

Der indgår i alt 142 besætninger

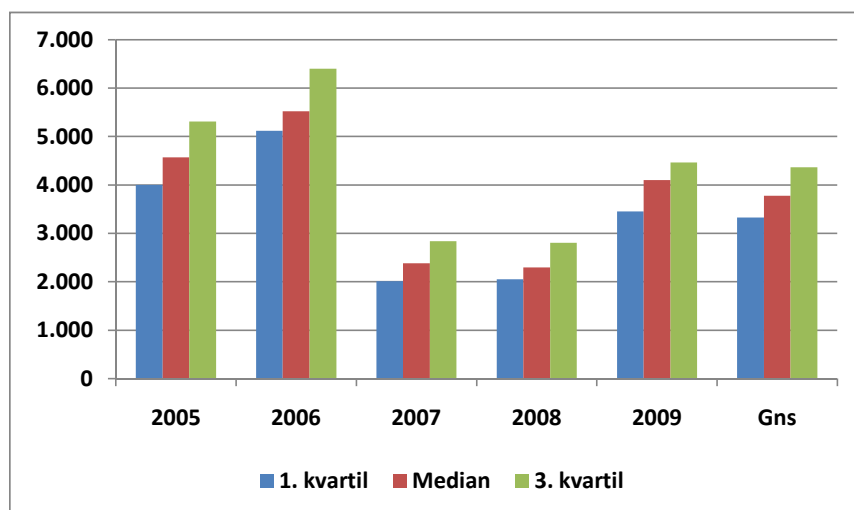
Medianen er den midterste værdi i et sorteret datasæt.

1. kvartil, har 25 % af observationerne der er lavere, og 3. kvartil, har 25 % af observationerne der er højere

Det Europæiske Fællesskab og Ministeriet for Fødevarer, Landbrug og Fiskeri har deltaget i finansieringen af nærværende publikation

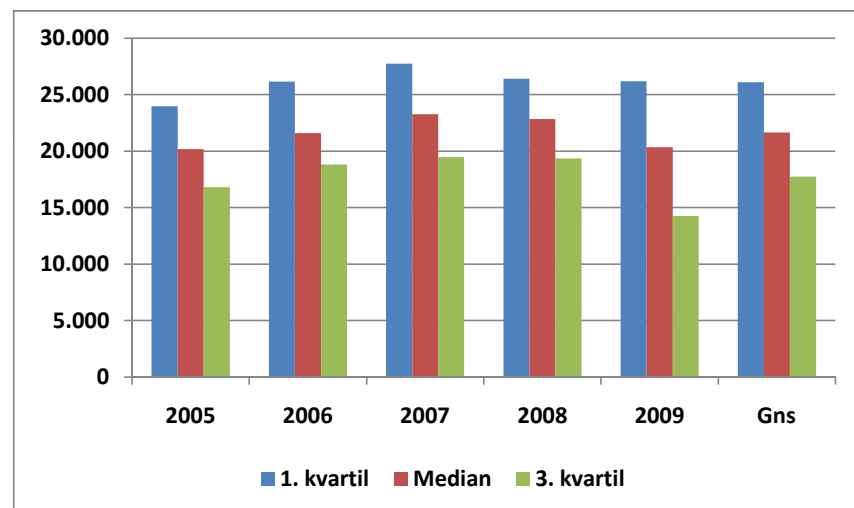
Dækningsbidrag

	1. kvartil	Median	3. kvartil
2005	4.003	4.567	5.308
2006	5.119	5.523	6.402
2007	2.011	2.383	2.840
2008	2.051	2.294	2.803
2009	3.454	4.103	4.464
Gns	3.327	3.774	4.364



Kapital bundet pr. enhed

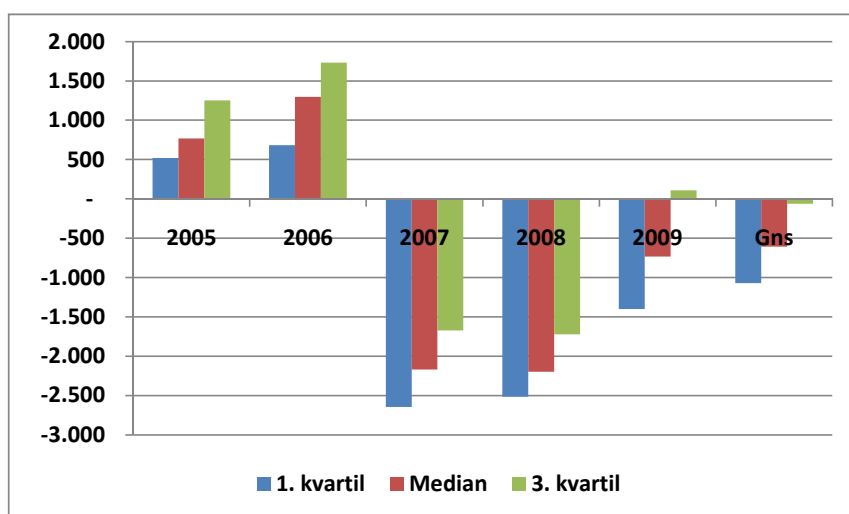
	1. kvartil	Median	3. kvartil
2005	23.967	20.174	16.813
2006	26.138	21.593	18.804
2007	27.727	23.258	19.471
2008	26.415	22.851	19.346
2009	26.179	20.340	14.262
Gns	26.085	21.643	17.739



Business check. 30 kg produktion

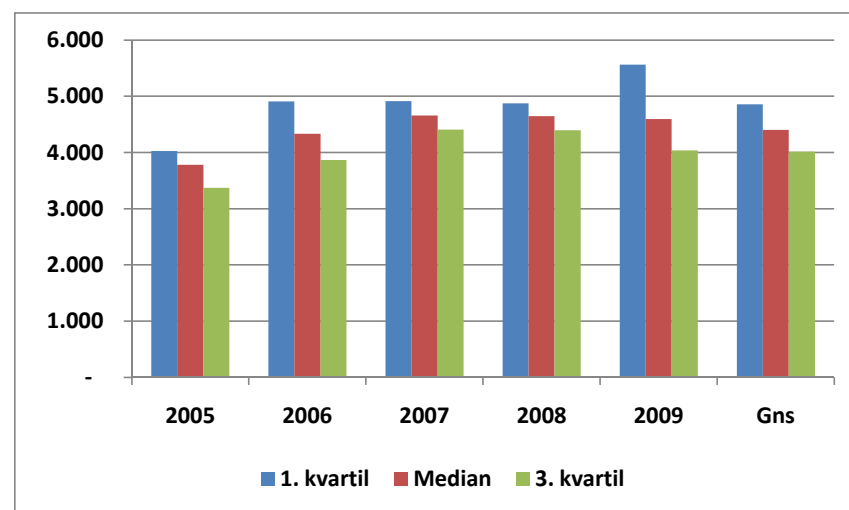
Resultat pr årsso

	1. kvartil	Median	3. kvartil
2005	519	767	1.251
2006	683	1.295	1.733
2007	-2.644	-2.170	-1.674
2008	-2.514	-2.197	-1.722
2009	-1.402	-731	107
Gns	-1.072	-607	-61



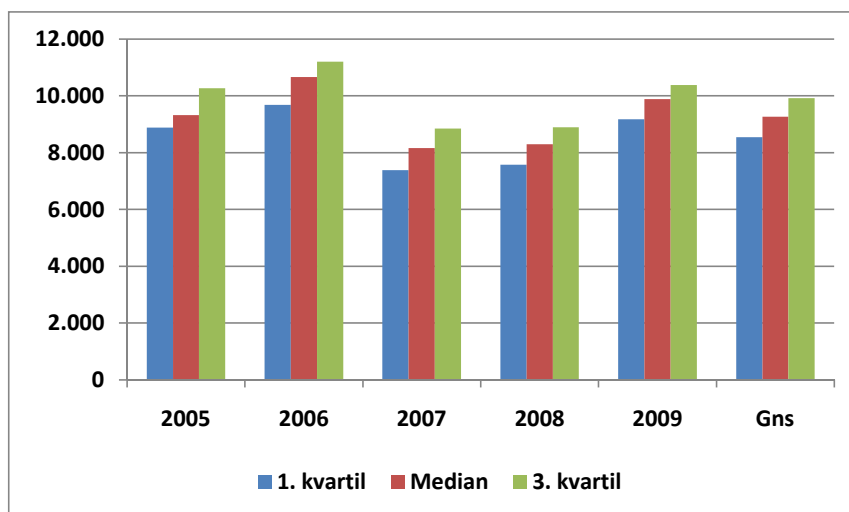
Krav til dækningsbidrag pr årsso

	1. kvartil	Median	3. kvartil
2005	4.024	3.779	3.372
2006	4.908	4.332	3.868
2007	4.911	4.658	4.406
2008	4.874	4.644	4.397
2009	5.560	4.595	4.038
Gns	4.856	4.401	4.016



Bruttoudbytte

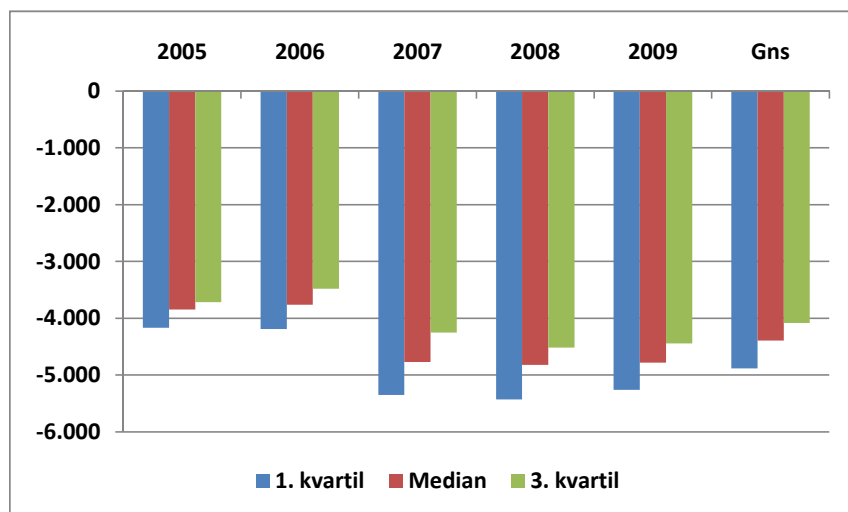
	1. kvartil	Median	3. kvartil
2005	8.881	9.324	10.263
2006	9.680	10.665	11.207
2007	7.387	8.156	8.850
2008	7.573	8.297	8.891
2009	9.175	9.886	10.376
Gns	8.539	9.266	9.917



Business check. 30 kg produktion

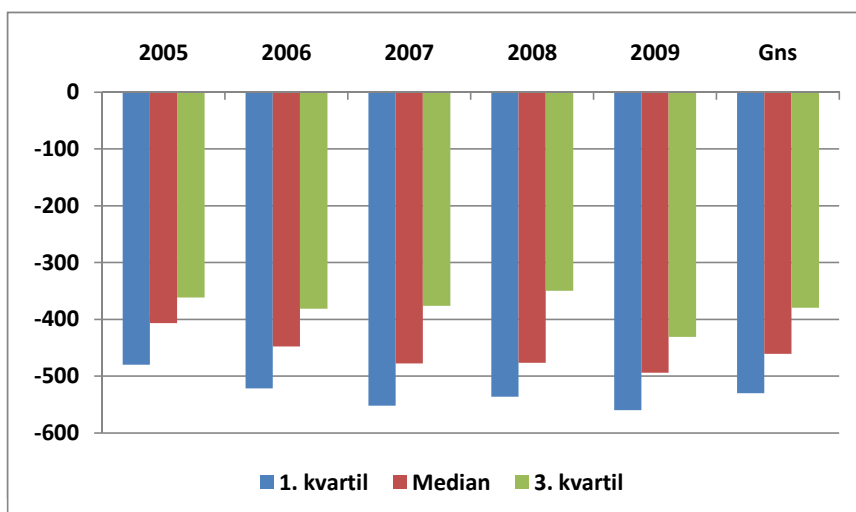
Foder

	1. kvartil	Median	3. kvartil
2005	-4.170	-3.846	-3.720
2006	-4.188	-3.763	-3.481
2007	-5.353	-4.769	-4.251
2008	-5.431	-4.821	-4.519
2009	-5.262	-4.779	-4.442
Gns	-4.881	-4.396	-4.082



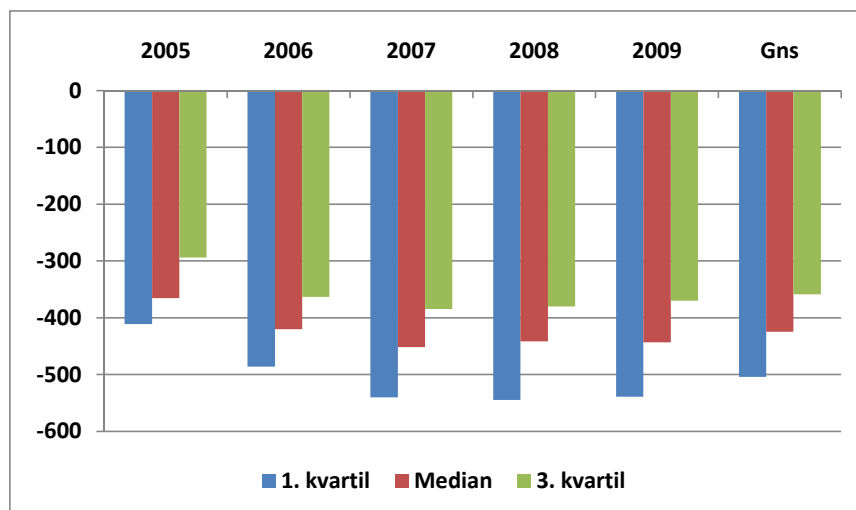
Dyrlæge og medicin

	1. kvartil	Median	3. kvartil
2005	-480	-406	-361
2006	-522	-448	-381
2007	-552	-478	-376
2008	-536	-477	-350
2009	-560	-494	-431
Gns	-530	-461	-380



Avl

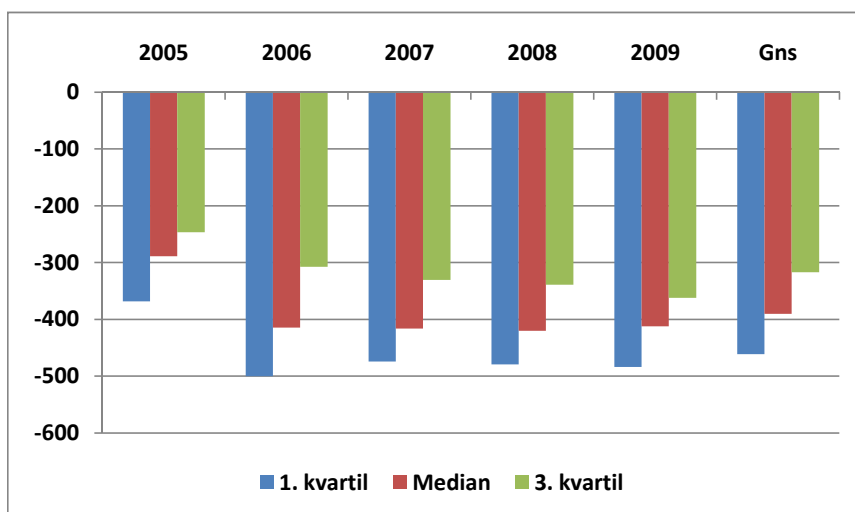
	1. kvartil	Median	3. kvartil
2005	-411	-366	-294
2006	-486	-420	-363
2007	-540	-452	-384
2008	-545	-442	-380
2009	-539	-443	-370
Gns	-504	-425	-359



Business check. 30 kg produktion

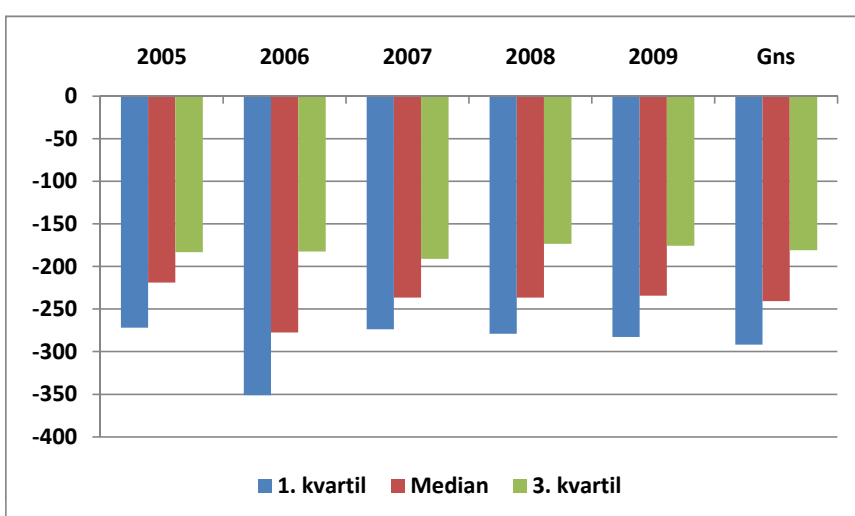
Energi

	1. kvartil	Median	3. kvartil
2005	-369	-289	-247
2006	-500	-415	-308
2007	-475	-416	-331
2008	-479	-420	-339
2009	-484	-412	-362
Gns	-461	-390	-317



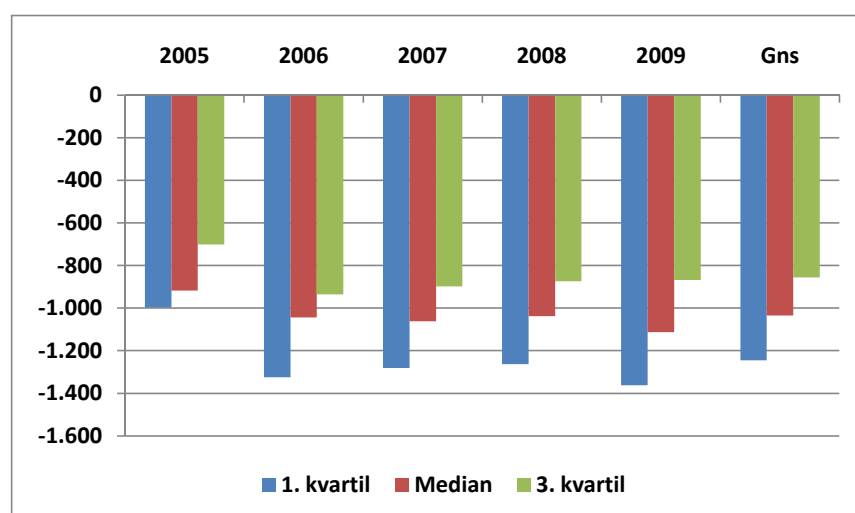
Vedligeholdelse

	1. kvartil	Median	3. kvartil
2005	-272	-219	-183
2006	-351	-277	-182
2007	-274	-237	-191
2008	-279	-237	-173
2009	-283	-234	-176
Gns	-292	-241	-181



Lønnekostninger

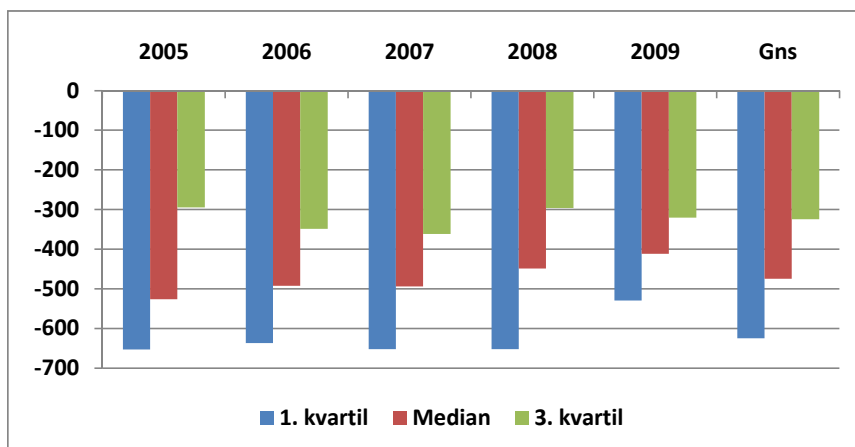
	1. kvartil	Median	3. kvartil
2005	-997	-918	-701
2006	-1.324	-1.043	-935
2007	-1.281	-1.062	-899
2008	-1.263	-1.038	-874
2009	-1.363	-1.112	-869
Gns	-1.246	-1.035	-856



Business check. 30 kg produktion

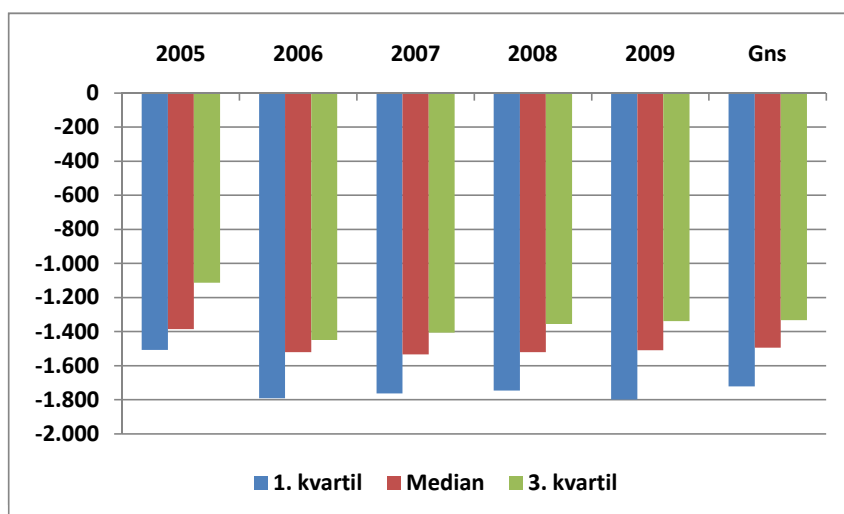
Ejeraflønning

	1. kvartil	Median	3. kvartil
2005	-653	-526	-294
2006	-637	-492	-348
2007	-652	-494	-362
2008	-652	-449	-296
2009	-529	-412	-321
Gns	-625	-475	-324



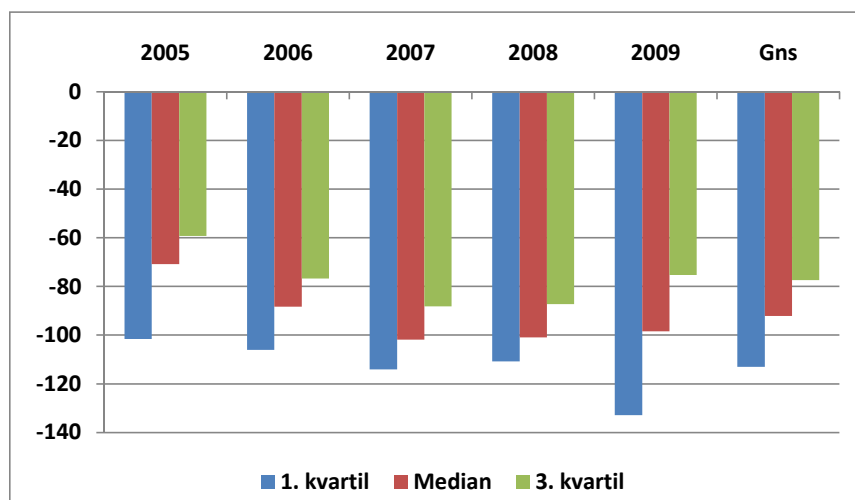
Aflønning, lejet og ejer

	1. kvartil	Median	3. kvartil
2005	-1.508	-1.386	-1.113
2006	-1.790	-1.520	-1.450
2007	-1.763	-1.534	-1.407
2008	-1.747	-1.520	-1.355
2009	-1.799	-1.509	-1.339
Gns	-1.721	-1.494	-1.333



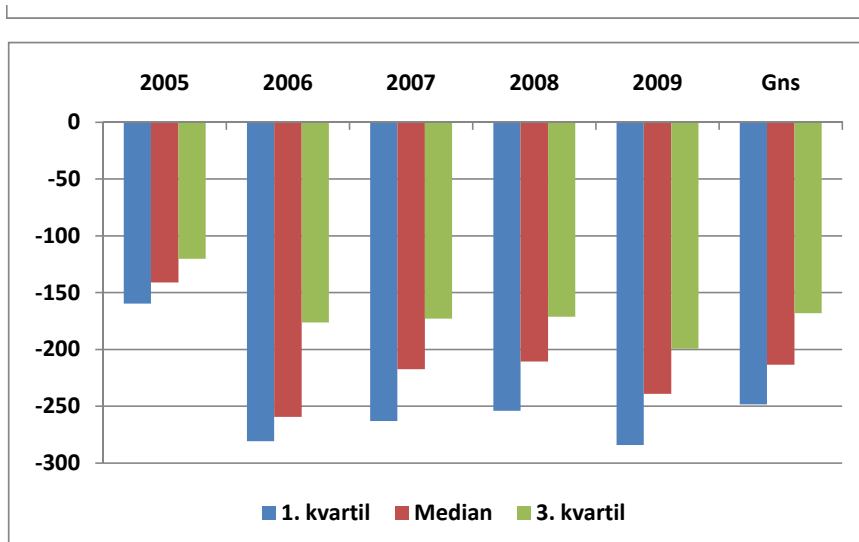
Forsikring

	1. kvartil	Median	3. kvartil
2005	-102	-71	-59
2006	-106	-88	-77
2007	-114	-102	-88
2008	-111	-101	-87
2009	-133	-98	-75
Gns	-113	-92	-77



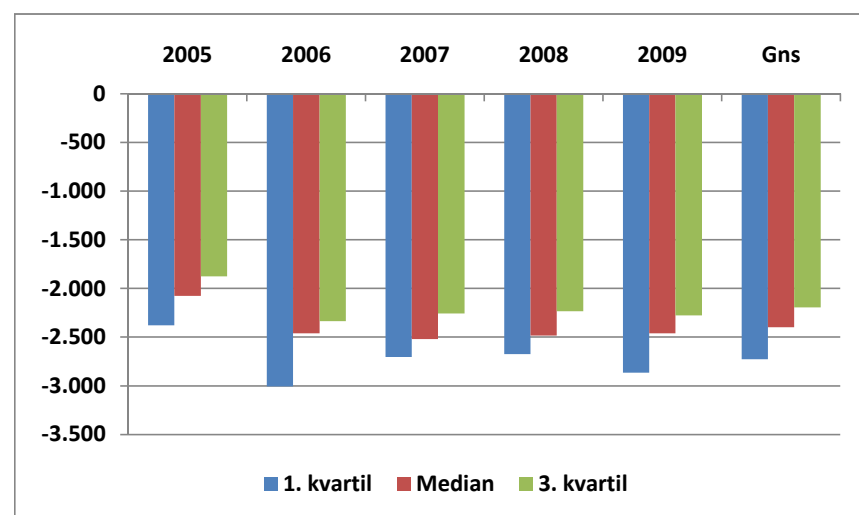
Diverse kap. omkostninger

	1. kvartil	Median	3. kvartil
2005	-160	-141	-120
2006	-281	-259	-176
2007	-263	-217	-173
2008	-254	-211	-171
2009	-284	-239	-199
Gns	-248	-214	-168



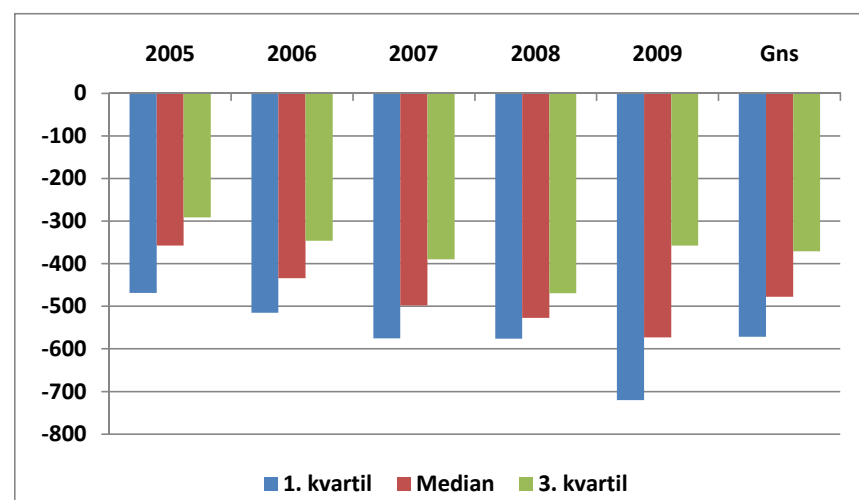
Kapacitetsomkostninger i alt

	1. kvartil	Median	3. kvartil
2005	-2.378	-2.076	-1.875
2006	-3.008	-2.460	-2.335
2007	-2.705	-2.521	-2.259
2008	-2.673	-2.483	-2.235
2009	-2.865	-2.460	-2.277
Gns	-2.726	-2.400	-2.196



Afskrivninger bygninger

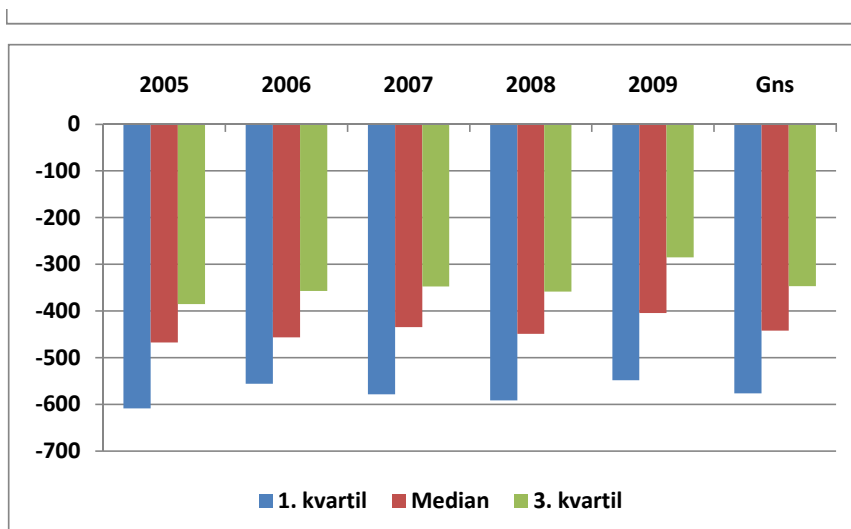
	1. kvartil	Median	3. kvartil
2005	-469	-357	-292
2006	-515	-434	-346
2007	-575	-498	-389
2008	-576	-527	-469
2009	-720	-573	-357
Gns	-571	-478	-371



Business check. 30 kg produktion

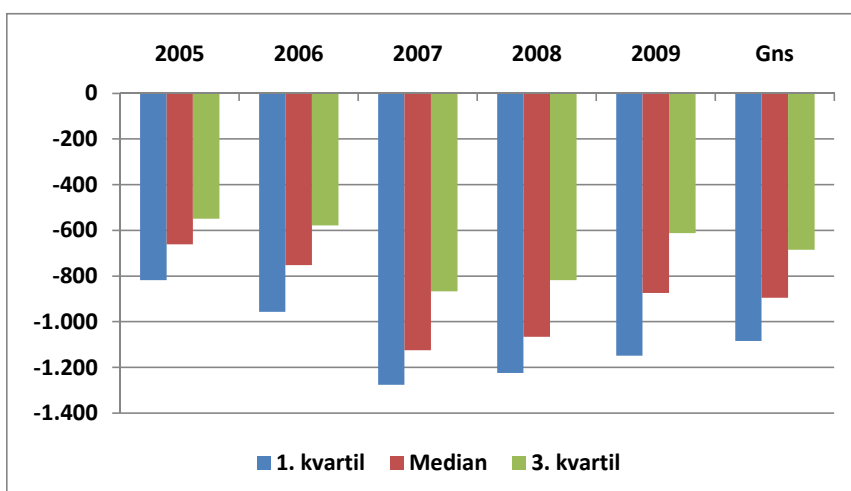
Afskrivninger inventar

	1. kvartil	Median	3. kvartil
2005	-609	-467	-385
2006	-556	-457	-357
2007	-578	-435	-347
2008	-592	-449	-358
2009	-548	-404	-285
Gns	-577	-442	-347



Renter

	1. kvartil	Median	3. kvartil
2005	-818	-661	-549
2006	-957	-752	-579
2007	-1.276	-1.125	-868
2008	-1.224	-1.066	-818
2009	-1.149	-875	-612
Gns	-1.085	-896	-685



Antal producerede grise pr årssø

	1. kvartil	Median	3. kvartil
2005	24,0	26,0	27,0
2006	24,9	25,8	26,9
2007	25,4	26,7	28,2
2008	25,5	26,4	27,3
2009	25,5	26,9	28,3
Gns	25,1	26,4	27,5

