

H28 - Adjustment of cover in weaner facilities during winter



Correct lying behaviour. The temperature is right

In general

1. Check the pigs' behaviour early in the morning (before 8 o'clock).
2. Compare the room temperature with the desired temperature in the display of the ventilation system.
3. Look at the pigs through the window in the door and quietly walk into the section and observe the pigs.
4. Covers must always have a bent front edge.



The pigs are huddling: It is too cold



The pigs pull away from the cover: It is too warm



Uneven stocking density: Some pigs are cold, some too warm, others fine

If it is too cold:

- Lower the cover, if possible.
- Check covers for leakages and repair these.
- If, for the last 24 hours, the room temperature in the section was identical to the desired temperature, increase the desired temperature by 1°C.
 - Check with a minimum-maximum thermometer and in the control panel.
- If the room temperature is lower than the desired temperature:
 - Check floor and room heating - see H29.
 - Check the setting of the minimum ventilation.
- Tried everything: Contact your pig advisor.

If it is too warm:

- Lower the desired temperature by 0.5°C.

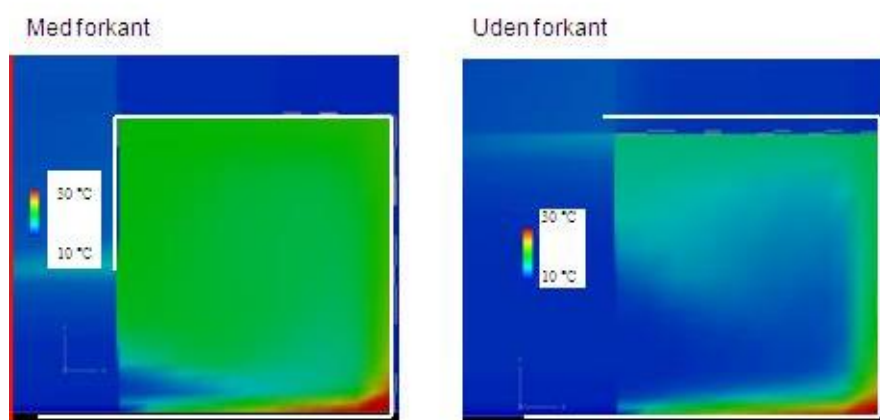
Uneven stocking density in the facility:

- Neutralize differences in stocking density.
- Raise the cover slightly in pens where the pigs are too warm.
- Lower cover and/or place a board of straw in pens where the pigs are too cold.

Additional comments - Adjustment of cover in weaner facilities during winter

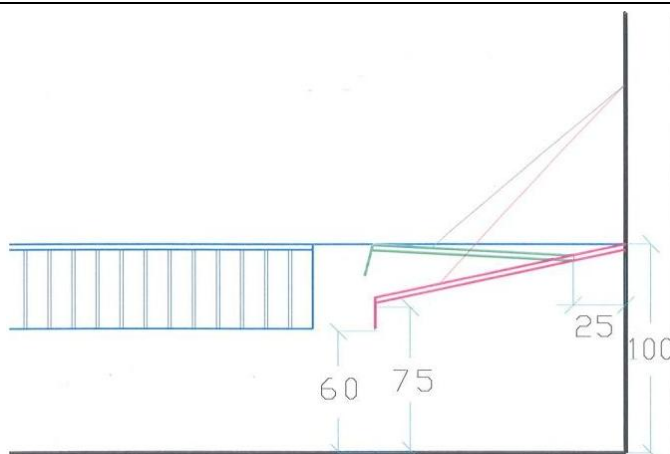
1. It is essential to check on the pigs' behaviour at the coldest time of the day, i.e. before 8 o'clock in the morning.
3. It is crucial to check the pigs' lying behaviour before any disturbances chase them up, because if that happens, the chance of inspection is lost.
4. In WTF production or in case of large variances in the weight interval within the same section, it may be an advantage to have an extra, adjustable front edge on the cover.

Effekt af nedadbukket forkant



Svend Morsing, DJF – JBT/FCB

These images show covers with and without a bent front edge. The distance between the bent front edge and the floor / straw board determines the temperature under the cover. A distance of 40 to 60 cm will result in an expected excess temperature of 6 to 8 degrees.



The effect of removing the front edge on the upper images can be compared with raising the cover with fixed front edge as in this figure. The open area towards the pen is not increased quite as much by raising the cover as shown in the images above. Put roughly, the change illustrated in the figure may reduce the temperature by 3-4 degrees in the creep area. Once the lid of the covers is raised above the pen partitions, open up completely to avoid chimney effect.