

Take care of your sick pigs

Anja Kibsgaard, veterinarian, Ø-Vet

Tina Birk Jensen, SEGES Innovation

Grisekongressen 2023



SEGES
INNOVATION

Danish pig production is challenged!

SAMFUND 15. jan. 2019 - 14:04 | Opdateret 15. jan. 2019 - 17:52 ▶ Lyt til artikel

Ny rapport viser stort svigt af syge grise



15. oktober 2019

Uacceptabelt, at så mange landmænd ikke tager korrekt hånd om deres grise, når de er syge

- Syge dyr skal behandles, uanset hvad årsagen er, fastslår formand for Den Danske Dyr lægeforening, Hanne Knude Palshof. Hun er foruroliget over, at der fortsat er så mange landmænd, der ikke tager korrekt hånd om syge og tilskadede grise. DDD er klar til mødes med fødevareminister Mogens Jensen for at drøfte mulige løsninger.

Pressemeddelelse, 3. februar 2023

TÅRNHØJT NIVEAU AF OVERTRÆDELSER I NY DYREVELFÆRDSRAPPORT

Knap hver tredje svinebesætning og hver anden kvægbesætning i Fødevarestyrelsens dyrevelfærdskontrol har ikke styr på dyrevelfærden, viser ny rapport. Dyrenes Beskyttelse advarer om alvorlige dyrevelfærdsproblemer i dansk landbrug.

9. juni 2022 kl. 03.00

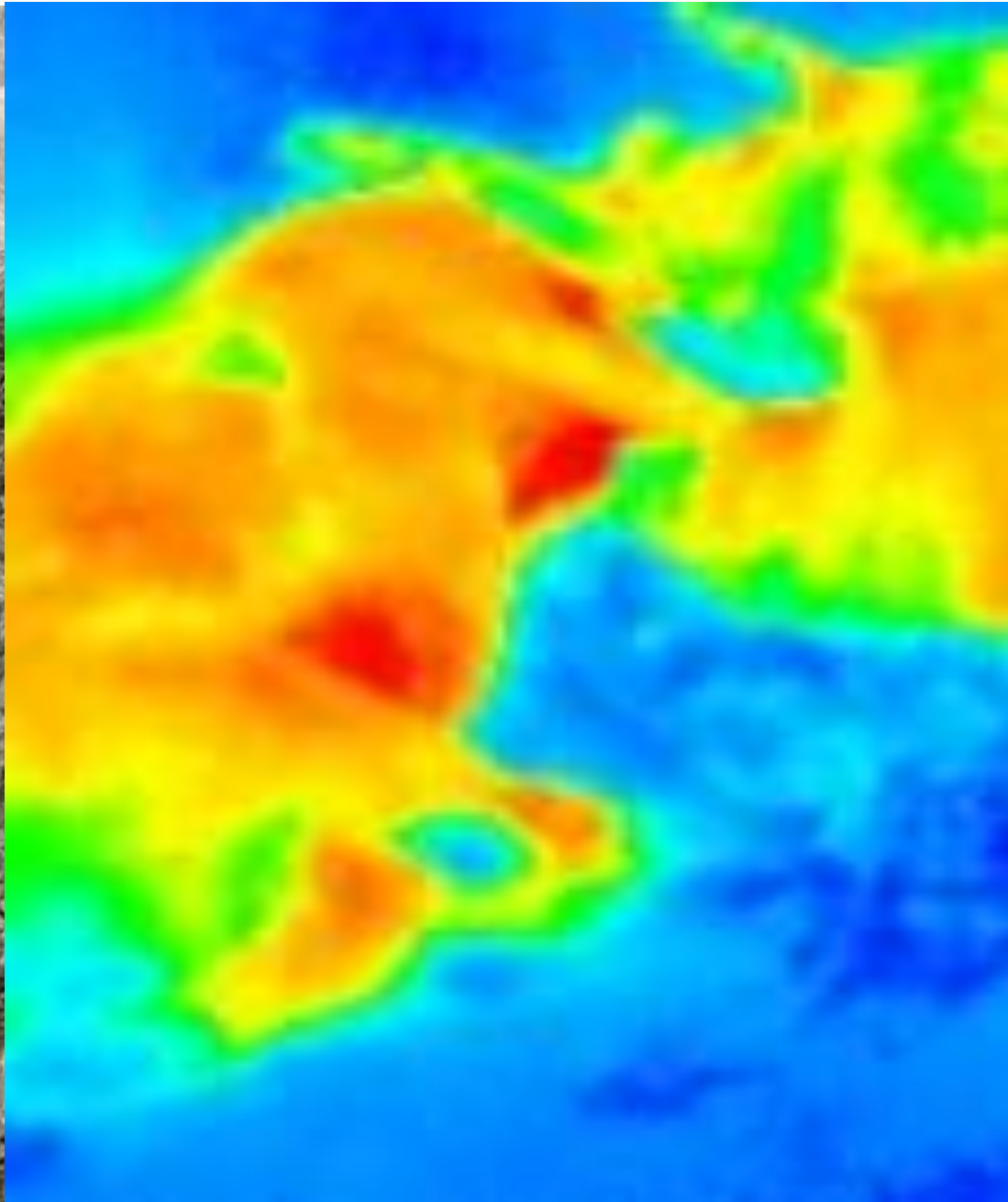
Langt over hver fjerde svinebesætning overtræder regler for dyrevelfærd i stikprøver. Det er tiende år i træk

Syge grise bliver ikke plejet ordentligt, og mange mangler adgang til beskæftigelsesmateriale. Det er blandt de hyppigste lovbrud, myndighederne finder ved kontrol af landets svinebesætninger. Niveaet har ligget højt i ti år trods forsikringer om bedring fra landbruget og skiftende ministre.









This works....



www.oevet.dk



+45 55 50 08 85

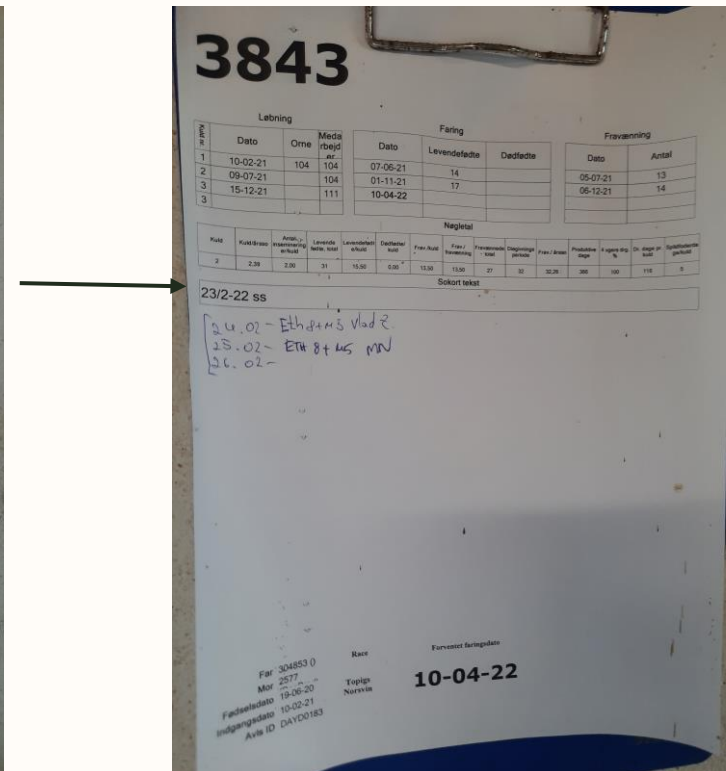


kontor@oevet.dk



Køberupvej 33, 4700 Næstved
Skomagervej 6, 7100 Vejle

Health record



www.oebet.dk



+45 55 50 08 85



kontor@oebet.dk



Køberupvej 33, 4700 Næstved
Skomagervej 6, 7100 Vejle

So... let's make sure we look at it the same way



www.oevet.dk



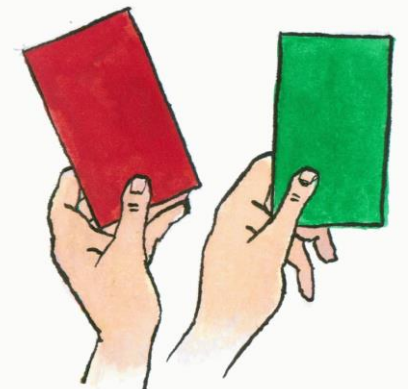
+45 55 50 08 85



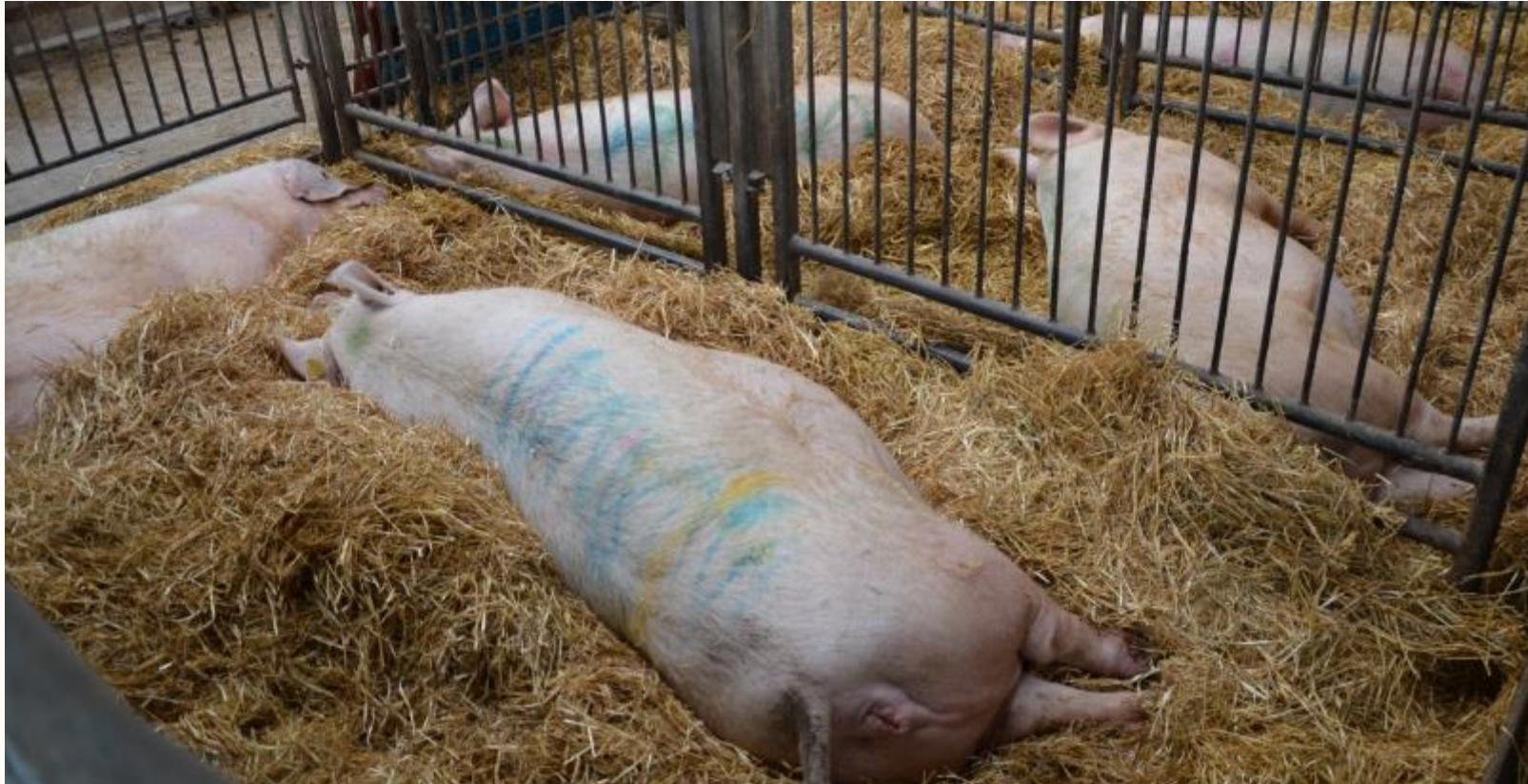
kontor@oevet.dk



Køberupvej 33, 4700 Næstved
Skomagervej 6, 7100 Vejle



Does this hospital pen meet the requirements?



www.oevet.dk



+45 55 50 08 85



kontor@oevet.dk



Køberupvej 33, 4700 Næstved
Skomagervej 6, 7100 Vejle



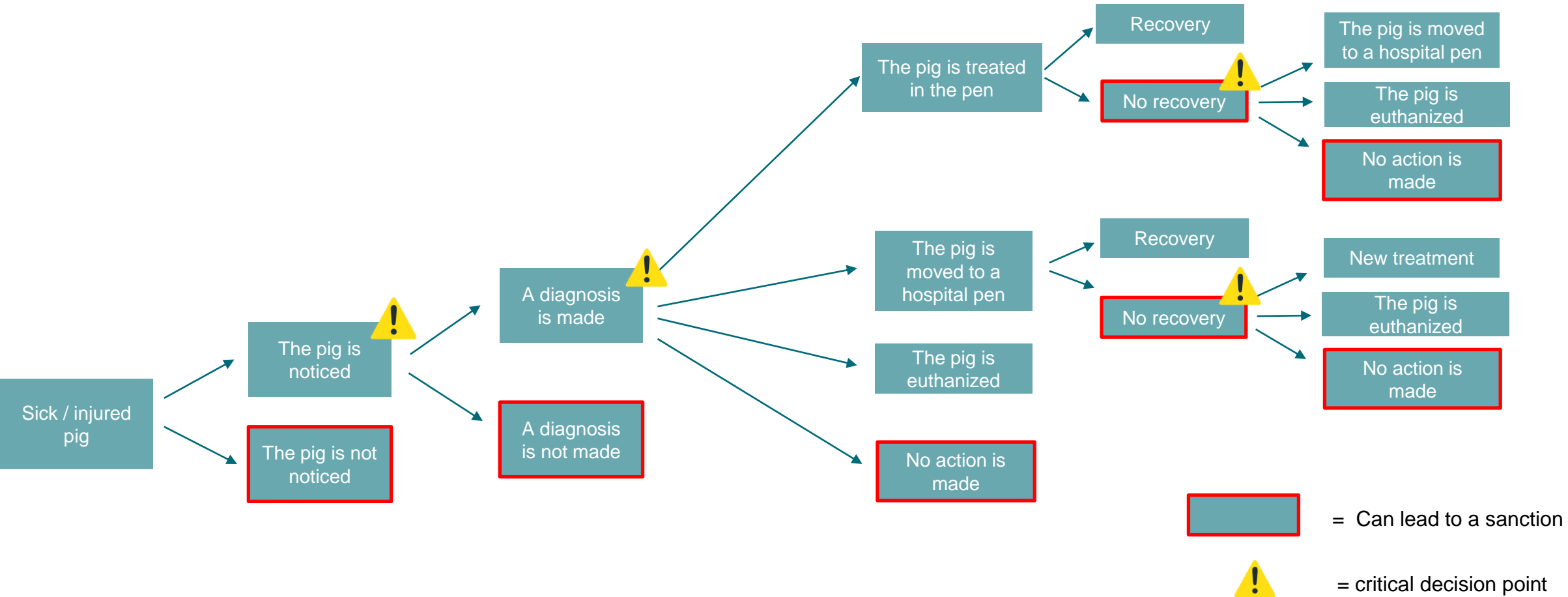
Does this hospital pen meet the requirements?



Does this hospital pen meet the requirements?



Critical decision points



Which animal group has most non-compliances?

Weaners

33%



Tail bite
Ear wound
Encephalitis
Unthrifty

Slaughter pigs

33%



Hernia
Lameness
Tail bite

Sows

33%



Leg problems
Shoulder ulcers

We focus on two typical lesions

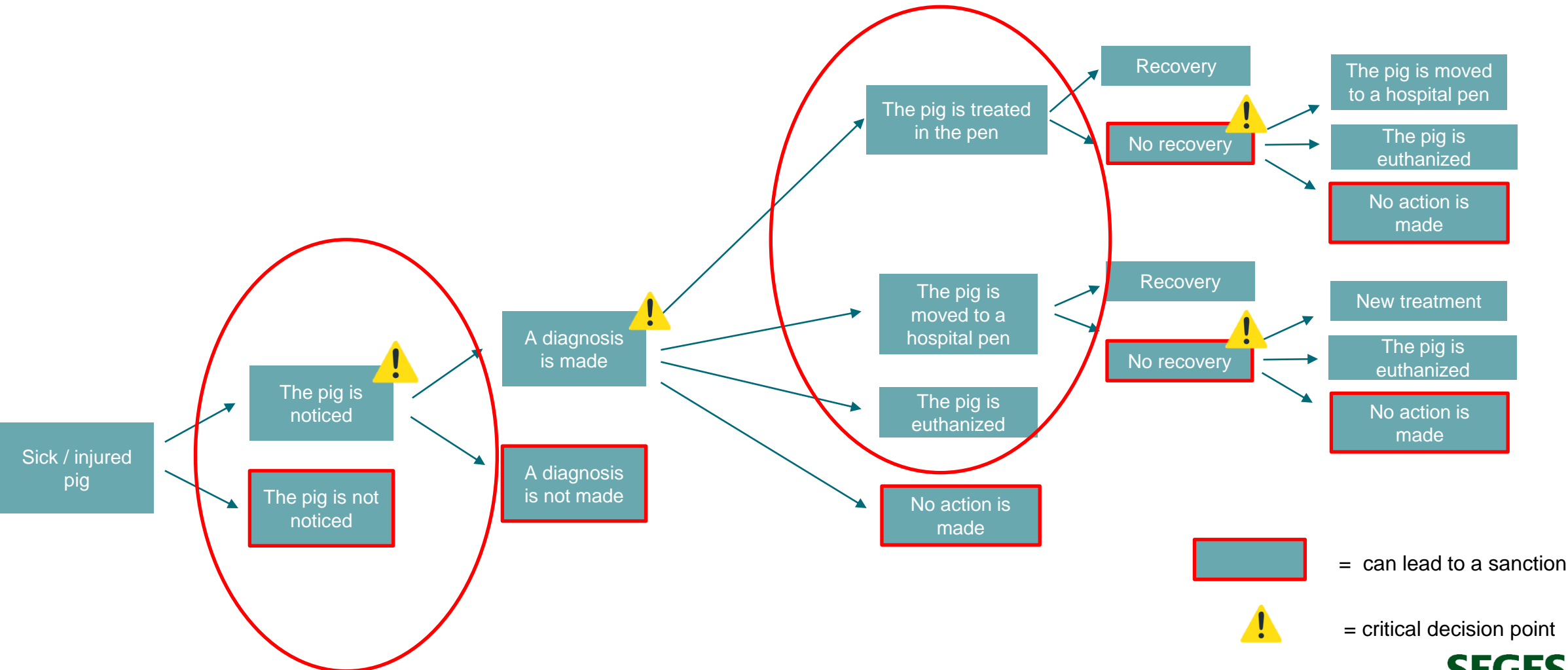
Lameness in sows





Hernia in slaughter pigs



Lameness in sows - critical decision points



 = can lead to a sanction
 = critical decision point

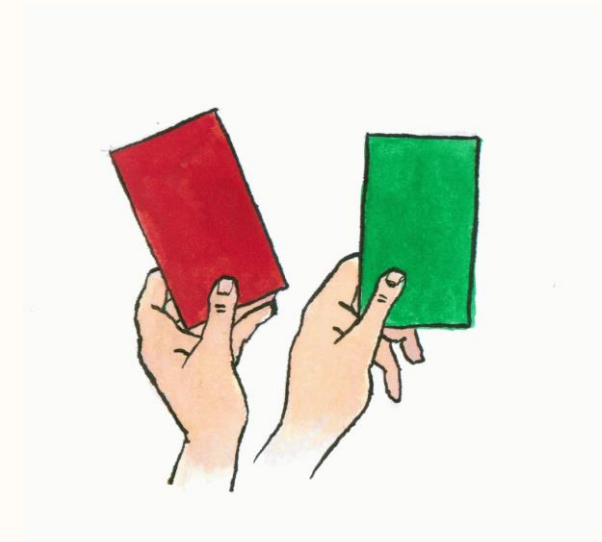
Lameness in sows – case 1



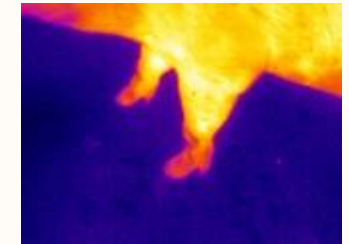
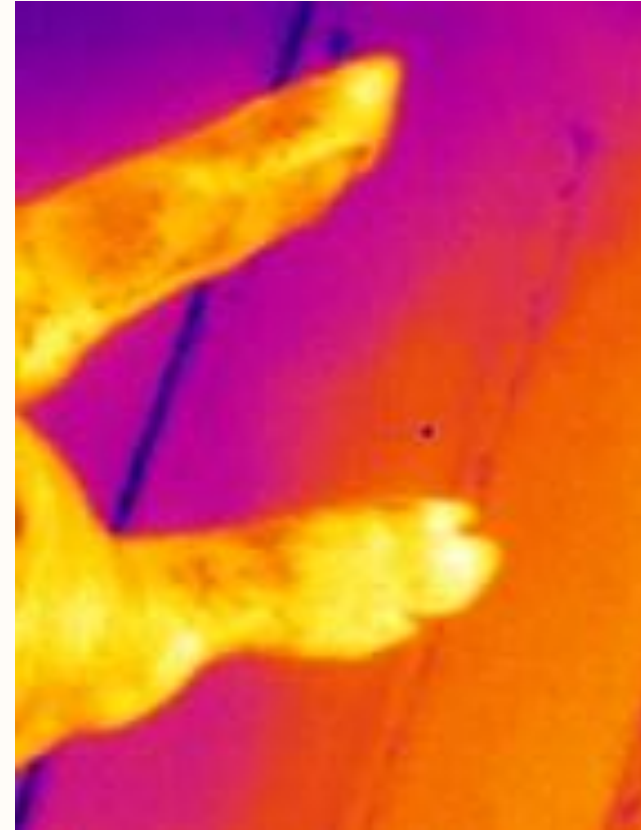
www.oevet.dk



+45 55 50 08 85



Lameness in sows – case 1



Not lame sow



www.oevet.dk



+45 55 50 08 85



kontor@oevet.dk



Køberupvej 33, 4700 Næstved
Skomagervej 6, 7100 Vejle

Lameness in sows – case 2



www.oevet.dk



+45 55 50 08 85

ko

Lameness in sows – case 3

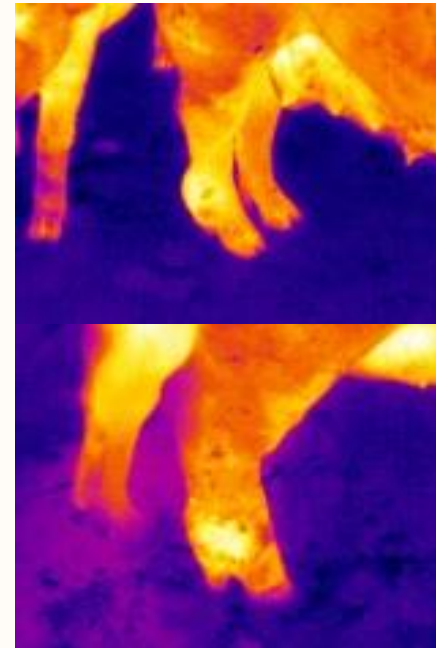


www.oevet.dk



+45 55 50 08 85

Lameness in sows – case 3



www.oevet.dk



+45 55 50 08 85



kontor@oevet.dk



Køberupvej 33, 4700 Næstved
Skomagervej 6, 7100 Vejle

Lameness in sows – what is the correct action?

Thorough inspection of all sows in the gestation unit is important!

The earlier you treat a lame sow
The more correct you treat a lame sow
—————> The better prognosis

When must a lame sow be moved to a hospital pen?

- If the sow is not able to manage together with the other sows

When must the lame sow be euthanized?

- If the sow is believed to have a broken leg
- If there are no signs of recovery



Herna in pigs – case 1



Hernia in pigs – case 2



Hernia in pigs – what is the correct action?

When can the pig stay in the original pen?

- If the hernia is small

When must the pig be moved to a hospital pen?

- If the hernia is big
- If there is a wound on the hernia sac

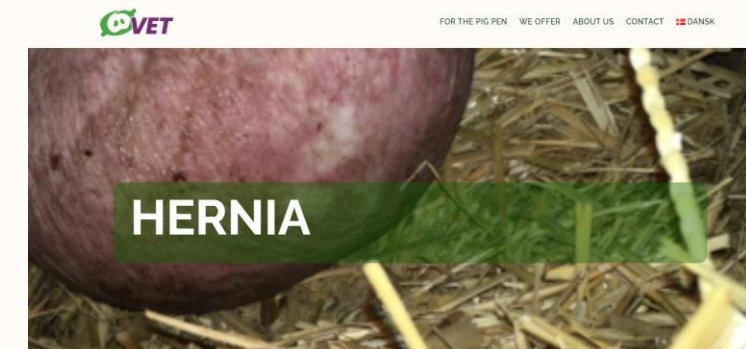
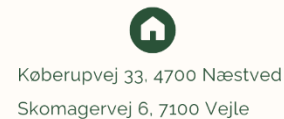
When must the pig be euthanized?

- If the pig is unthrifty
- If the movements are reduced because of the hernia
- If the hernia touches the floor



Hernia certifications

- You can transport up to 5 hernia pigs together in a pen with extra space and bedding
- Provided that the vet has made a certification no more than 7 days prior to the transport



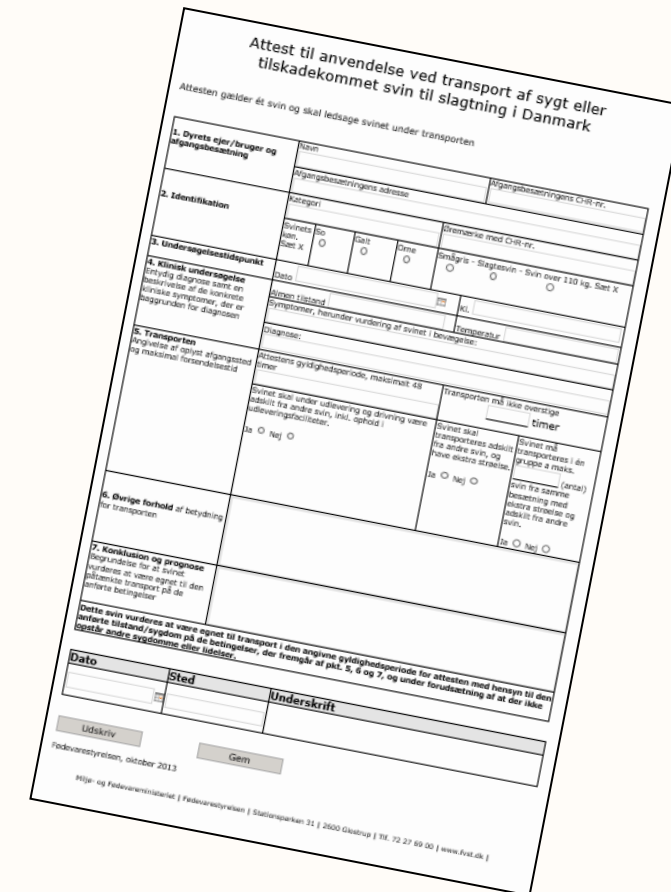
SEE ALL CERTIFICATES

Pigs with hernias

In O-Vet, we make a big effort to send as many pigs as possible to slaughter - this is also the case with pigs with hernias. We therefore issue hernia certificates for slaughter-ready pigs on a daily basis.

Slaughter certifications

- ✓ Valid for 48 hours
- ✓ Pigs with minor injuries can be sent to slaughter
- ✓ Pigs with injuries can be sent to slaughter on a special transport where the pigs are separated with extra space and soft bedding.



www.oevet.dk



+45 55 50 08 85



kontor@oevet.dk



Køberupvej 33. 4700 Næstved
Skomagervej 6. 7100 Vejle

Treatment of sick and injured pigs



Farm blindness

or

Jeppe K?



www.oevet.dk




+45 55 50 08 85



kontor@oevet.dk



Køberupvej 33, 4700 Næstved
Skomagervej 6, 7100 Vejle

A photograph of a bed in a dilapidated room. The bed has a metal frame and is covered with a striped blanket and a brown mattress. The room has peeling walls and a window in the background. The image is framed with a torn paper effect.

Easily digestible, protein-rich meals
(old feed covered with flies)

Natural air conditioning
(drafting from ventilation)

Atmospheric
(very poor light)

You sleep like the Princess on the Pea
(believe me - lots of "peas")

To the connoisseur of life
(The cold, wet environment leads the mind to how good everything else is)

Charming
(deteriorated)

Design of hospital pens



www.oevet.dk



+45 55 50 08 85



kontor@oevet.dk



Køberupvej 33, 4700 Næstved
Skomagervej 6, 7100 Vejle

Correct use of hospital pens

- ✓ Placed where they are to be used
- ✓ Placed where you come
- ✓ Bright and friendly
 - ✓ Otherwise, you are not coming
- ✓ Enough space
- ✓ **Dry and soft bedding....**
- ✓ Cooling
- ✓ Heating
- ✓ FRESH water and feed
 - ✓ ATTENTION on animals with impaired movement
- ✓ Remember a health record at the hospital pen
- ✓ Who is in charge of the hospital pens???



Soft bedding can part the waters

In hospital pens, at least 2/3 of the total minimum floor areal must have soft bedding.

A soft bedding can be a rubber mat or sufficient straw, **so that the pigs are not in direct contact with the floor.**

There must be a heating source and a cooling facility.



Bekendtgørelse om dyrevelfærdsmæssige mindstekrav til hold af grise



www.oevet.dk



+45 55 50 08 85

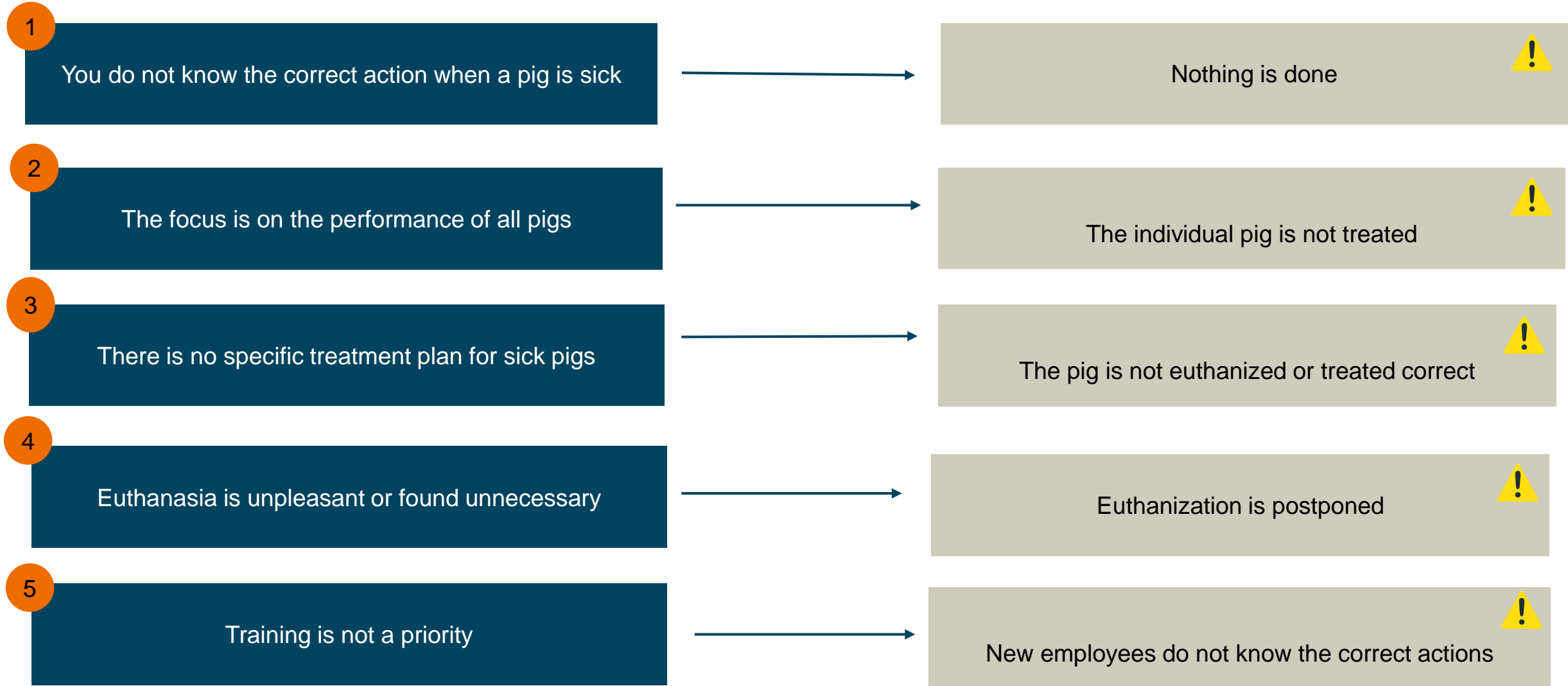


kontor@oevet.dk



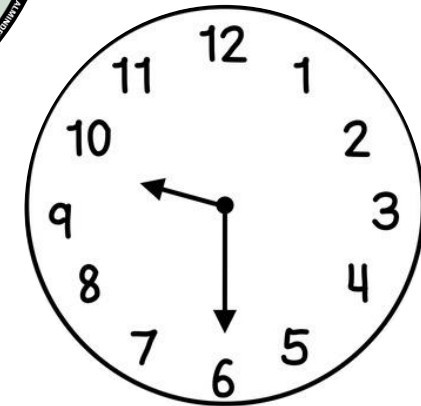
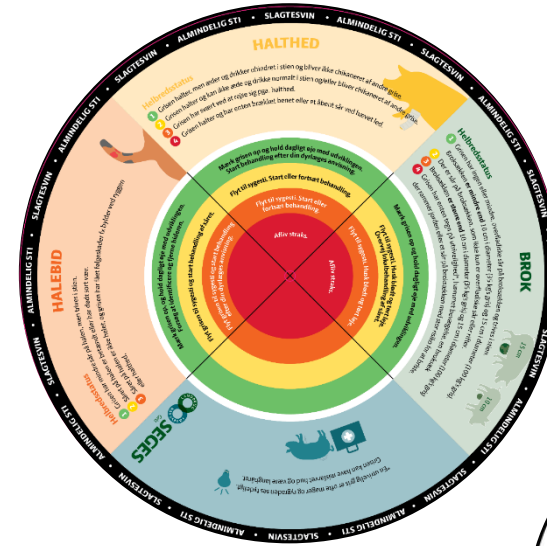
Køberupvej 33, 4700 Næstved
Skomagervej 6, 7100 Vejle

What typically goes wrong – and why?



Three things can help!

1. Instruction manual
2. Inspect sick and injured pigs at set times
3. Get the vet into the hospital pens



Summary

1. Have a plan for the sick and injured pigs
 - Remember the decision tree!
2. Decide who is responsible for the sick pigs
3. Decide who is responsible for euthanization
 - Remember the holidays!
4. Make sure new employees get proper training
5. Assess your hospital pens with critical eyes!





**ONLINE
KURSER**



GRATIS ONLINE KURSER

Bliv den bedste medarbejder i grisestalden
med hjælp fra online kurser.

Vælg mellem kurser om opgaverne med smågrise,
pattegrise, slagtegrise og søer.

Find kurserne på
kurser.seges.dk



**SEGES
INNOVATION**

STØTTET AF

Svineafgiftsfonden